

CITY OF NAPOLEON
ENGINEERING DEPARTMENT
SIGN PERMIT

(Please Print or Type)

Owner's Name

Address

Builder

Address

Tel.

SIGN

BILLBOARD

AWNING

MARQUEE

Location of Project:

Additional Information:

Dimensions

Date

PAID
Square Feet 0.5 1994
CITY OF NAPOLEON

Signature of Applicant

White - Applicant
Yellow - Clerk-Treasurer
Pink - Engineering
Gold - County Auditor

Do Not Write Within Boxed Area.
For Engineering Office Use Only.

Permit No.

Issued

By

Estimated Cost

Base Fee

Add

Total Fee

Steve Wash Inc
1074 N Scott Napoleon
Terry + Jack N Sign Co 228 East Per 1st Line 45802

COMPLETED

639

12-5-94

BMV

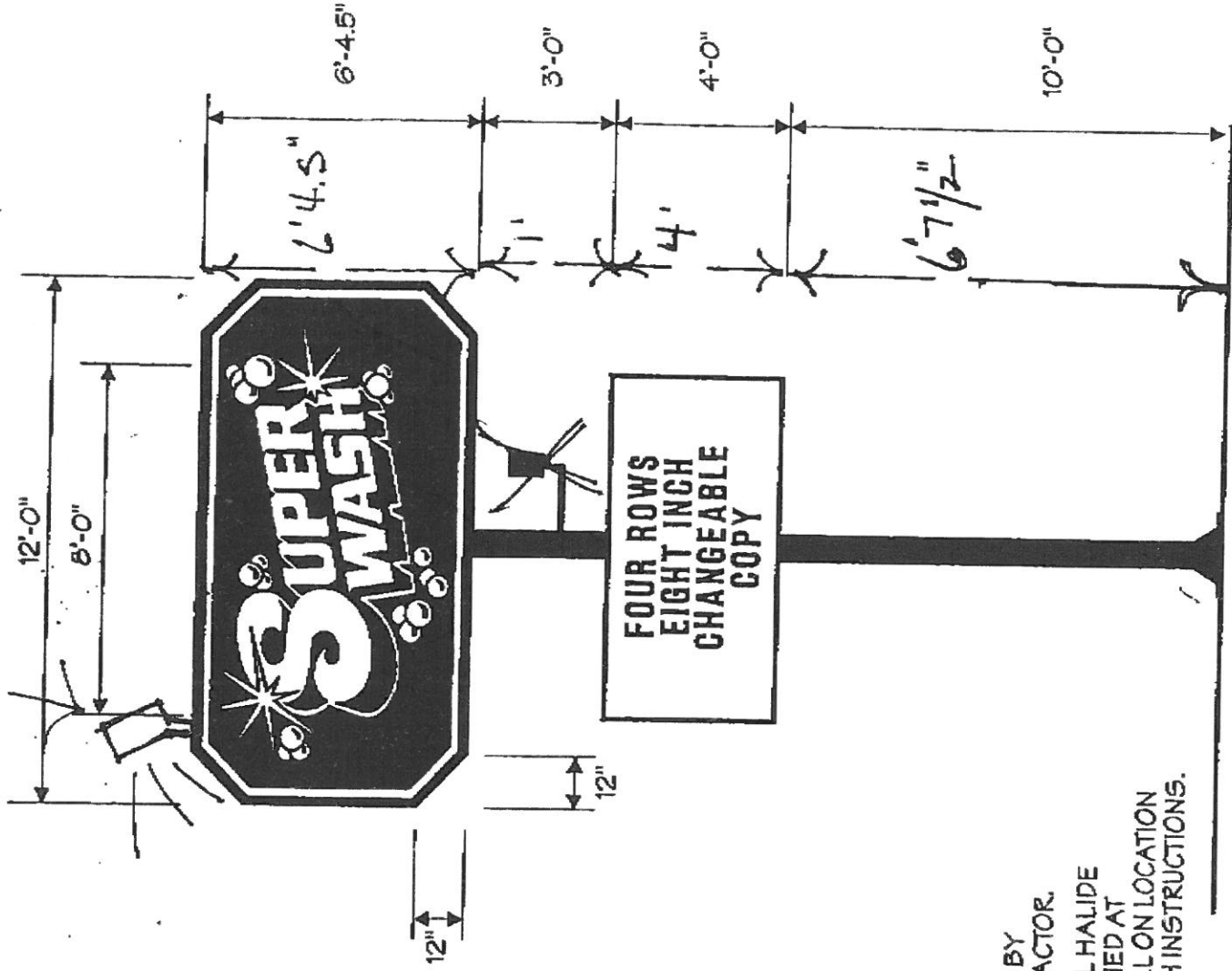
2490.0

17.79

22.79

Post sign with sketch
16' 12" x 6' 4" 10' 8" x 43"
Date 12-5-94

1000 W
METAL HALIDE FIXTURE



Post-It™ brand fax transmittal memo 7671		# of pages >	1
To	BRENT	From	RICK
Co	CITY OF NAPOLEON	Co	EAGLE SIGN
Dept	INSPECTOR	Phone	515-243-5663
Fax #	419-599-8393	Fax #	515-243-5313

NOTES:
 BASE INSTALLED BY
 BUILDING CONTRACTOR.
 1000 WATT METAL HALIDE
 FIXTURE FURNISHED AT
 JOBSITE. INSTALL ON LOCATION
 PER SUPER WASH INSTRUCTIONS.



EAGLE SIGN & ADVERTISING CO.
 5130 Park Ave. Des Moines, IA 50321
 515.243-5663

Project/Location: SUPER WASH 612

Dwg No: 490250J.1

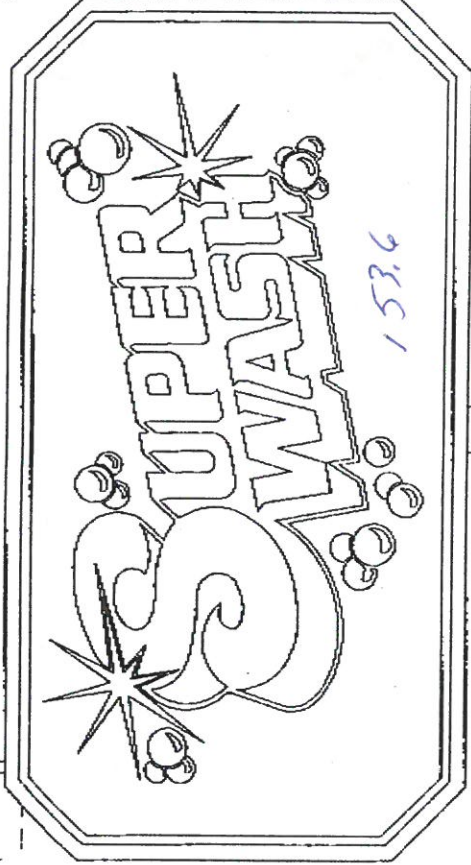
Scale: 1/4" = 1'-0"

Designer: J.CHARLES Date: 20MAY94

FAXED
DEC - 2 1996
BY: K. W. TO CHRIS

12'-0"

8'-0.5"

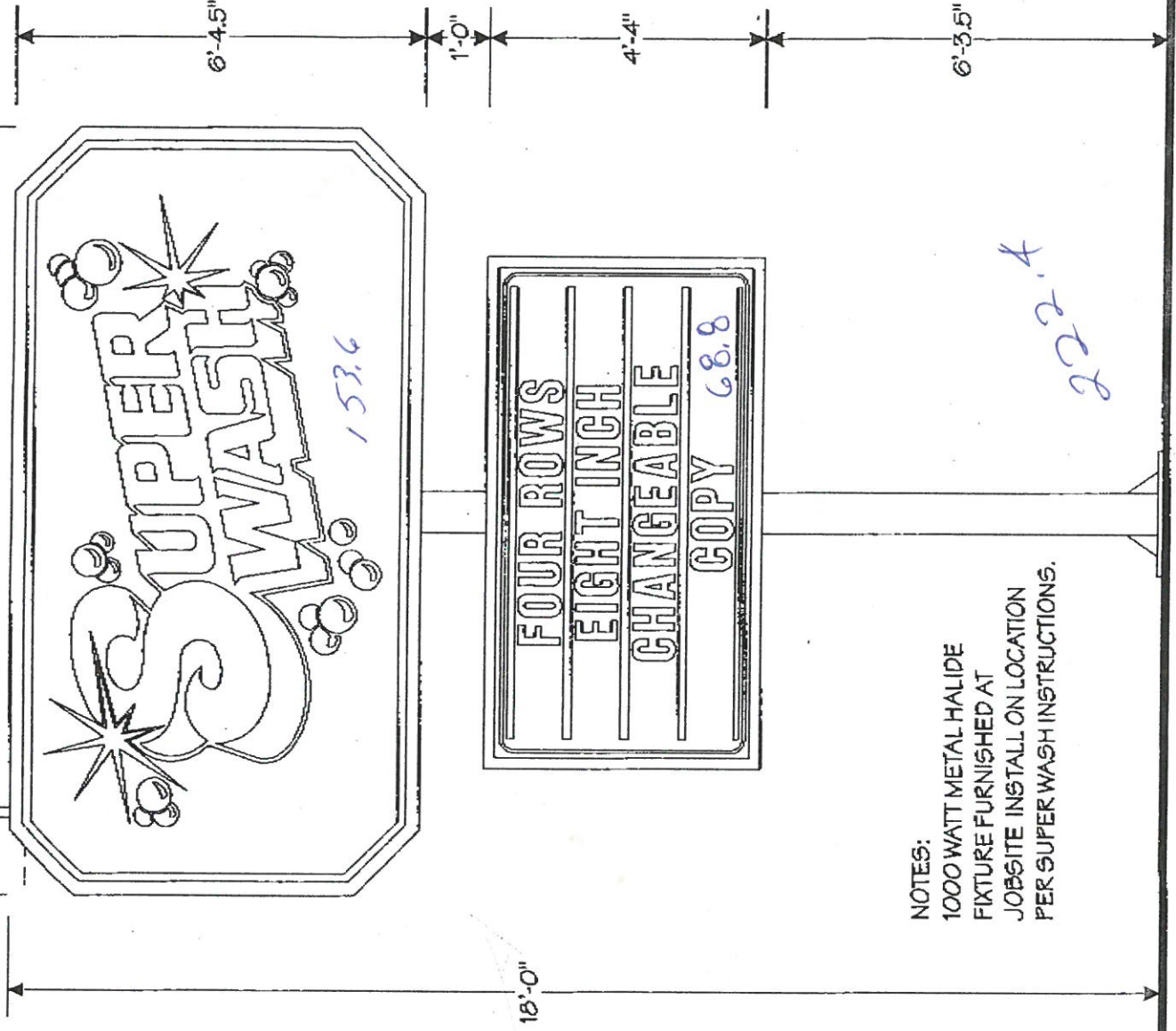


1536

FOUR ROWS
EIGHT INCH
CHANGEABLE
COPY 68.8

NOTES:
1000 WATT METAL HALIDE
FIXTURE FURNISHED AT
JOB SITE INSTALL ON LOCATION
PER SUPER WASH INSTRUCTIONS.

222.4



EAGLE SIGN & ADVERTISING CO.
5130 Park Ave. Des Moines, IA 50321
515.243-5663

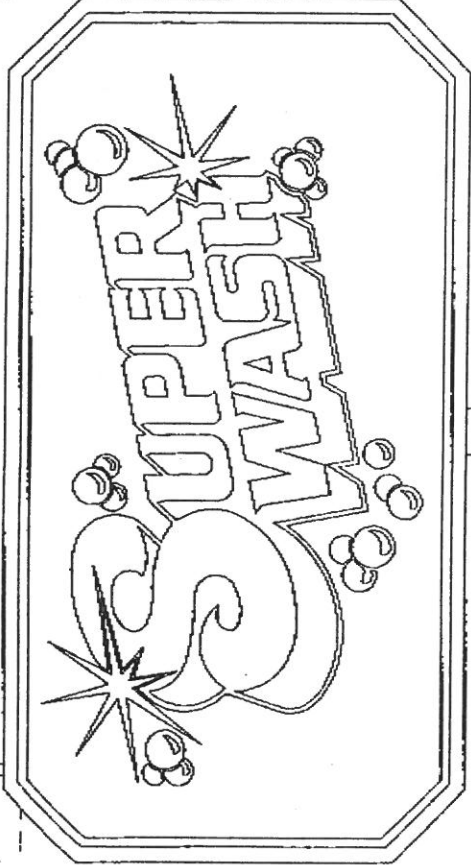
This design is the property of Eagle Sign & Advertising Co. and all rights to its use or reproduction are reserved.

Project/Location: SUPER WASH/NAPOLEON
Drwg No: 492021J.1
Scale: 3/8" = 1'-0"
Designer: J CHARLS Date: 02 DEC 94

FAXED
 DEC - 2 1996
 BY: N. W. TO CHRIS

12'-0"

8'-0.5"



6'-4.5"

1'-0"

4'-4"

6'-3.5"

FOUR ROWS
 EIGHT INCH
 CHANGEABLE
 COPY

18'-0"

NOTES:
 1000 WATT METAL HALIDE
 FIXTURE FURNISHED AT
 JOBSITE INSTALL ON LOCATION
 PER SUPER WASH INSTRUCTIONS.



EAGLE SIGN & ADVERTISING CO.
 5130 Park Ave. Des Moines, IA 50321
 515.243-5663

This design is the property of Eagle Sign & Advertising Co. and all rights to its use or reproduction are reserved.

Project/Location: SUPER WASH/NAPOLEON
 Drwg No: 492021.J.1
 Scale: 3/8" = 1'-0"
 Designer: JCHARLS Date: 02 DEC 94



GRC
ENGINEERING, INC.

10537 S. KOSTNER AVENUE OAK LAWN, ILLINOIS 60453

CUSTOMER SPRAYS SIGN

DATE 9-26-94

JOB SHIPEN HALL

R/A

Anchor bolts $\phi 1\frac{1}{2}$ " A307

$$T = C = \frac{901}{2 \times 18} = 15.34/\text{bolt} \quad f_b = \frac{15.3}{1.727} = 8.7 \text{ ksi}$$

$$\text{Base R} \quad M = 8.7 [(18 \times 2) - (8 \times 2)] \times 12 = 307 \text{ in.k.} \div (27 \times 12) = 0.9 \text{ in}^2 \text{ req'd}$$

$$\left(\frac{0.9 \times 6}{2.875} \right)^{1/2} = t = 1.42 \text{ in} \quad 1\frac{1}{2} \text{ in R no Gusset req'd.}$$

$\frac{1}{2}$ " Gusset's weld - $\frac{1}{4}$ " 10772 EWS $\times 1.33 = 4.94 \text{ in}$
 $L = 15.3 \div 0.9 = 3 \text{ in of weld.}$

Sign/Column connection

Conn. bolts $T = C = \frac{687}{2 \times 5.5} = 6.24/\text{bolt} \div .44 = 14.2 \text{ ksi} = \phi \frac{3}{8} \text{ bolts.}$

Connection R's $M = 6.2 (5.5 - 4) \times 6 \times 12 \times 12 = 3.3 \text{ in.k.} \div (27 \times 12) = .001 \text{ in}^2$
 $t = \left(\frac{.001 \times 6}{1.727} \right)^{1/2} = .17 \text{ USC } \frac{3}{8} \text{ in R.}$



GRC ENGINEERING, INC.
 OAK LAWN, LUNDS CO. MO

10537 S. KOSTNER AVENUE

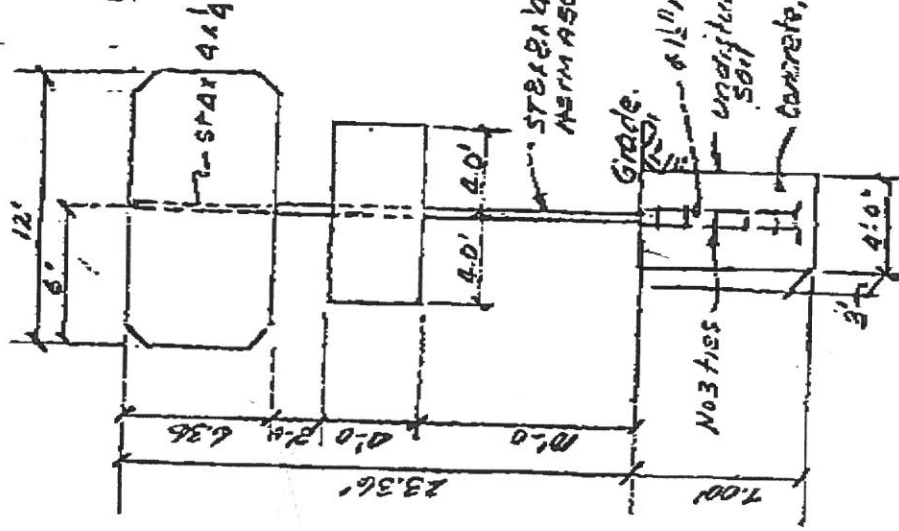
CUSTOMER: **EAGLE SIGN**

DATE: **9-26-94**

JOB: **SUPER WASH**

1/3

OHIO Winds & Sdrift - Exposure C
 $P = 16.4 \times 1.0 \times .99 \times 1.26 \times 1.2 = 24.3 \text{ psf}$



$A_1 = 14 \times 6 \times 2 = 74.32 \text{ ft}^2$
 $PW = 74.32 \times 0.243 = 1.8 \text{ k}$
 $A_2 = 4' \times 8' = 32 \text{ ft}^2$
 $PW = 32 \times 0.243 = .8 \text{ k}$
 $M = .8 \times 12 + 1.8 \times 20.2 = 45.9 \text{ k-ft}$
 $f_b = 50 / 180 = 29.3 \text{ ksi}$
 $F_b = .60 \times 46 \times 1.33 = 40.4 \text{ ksi}$
 $M = 1.8 \times 6.36 \times 1/2 \times 12 = 68.7 \text{ in-k}$
 $f_b = 68.7 / 4.11 = 16.7 \text{ ksi} < 40.4$
 FDI. 4" deep x 8" broad x 3" wide
 $f_y = 45.9 / (1.5 \times 4.11) = 17.7 \text{ FT}$
 $A_1 = 2.66 \times 8.91 \times 17.7 = 0.9 \text{ ksi}$
 $.501 \times 4 \times 7 \times 2 = 0.9 \text{ ksi}$

STEEL 2x4
 ASTM A500, GRB
 Grade.
 2-5/8" diameter bolts 1/2" hole.
 undisturbed soil
 concrete, $f_c = 3000 \text{ psi}$

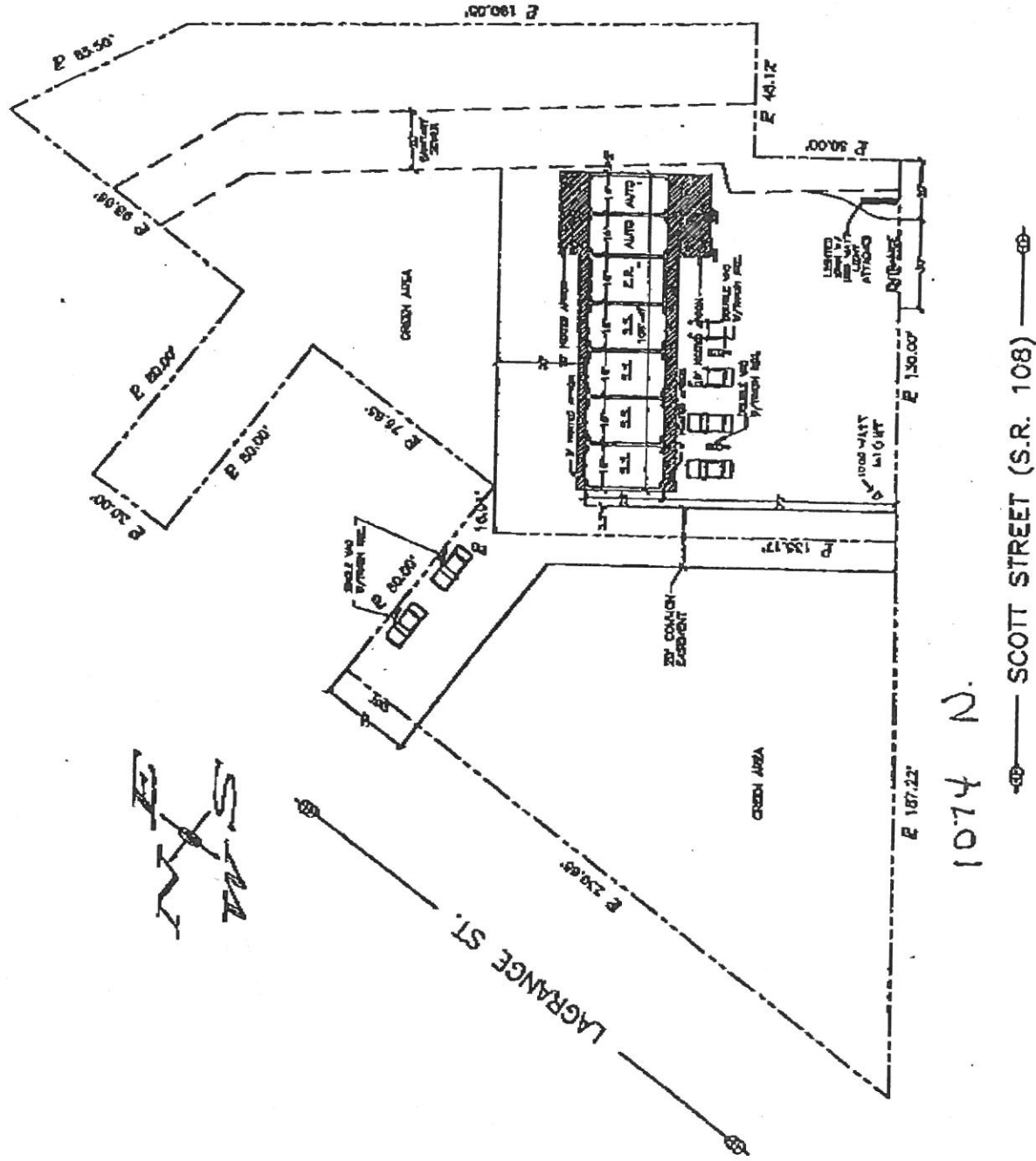
ELEVATION



G.R. Carstens
 9/27/94

BRENT DAMMAN

419-592-4010



1074 N.

SCOTT STREET (S.R. 108)

NAPOLEON, OH

JO-10E-11
4-8-94

R. SCHMITZ